

HUMBOLDT STATE UNIVERSITY - THEATRE ARTS SEISMIC RETROFIT

LANDSCAPING PLAN - 95 PERCENT CD

PLANT KEY

THEATRE ARTS

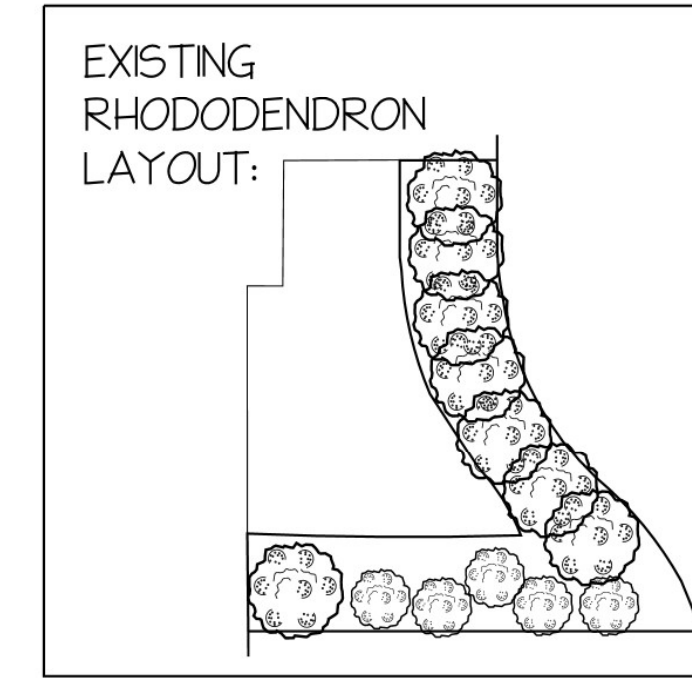
-  2 PURPLE LILY MAGNOLIA
Magnolia liliiflora 'Nigra' 15-GAL
-  3 NATIVE WESTERN AZALEA
Rhododendron occidentale 5-GAL
-  7 NATIVE HEART'S DESIRE CEANOTHUS
Ceanothus gloriosus 'Heart's Desire' 1-GAL
-  6 RAZZLEBERRI FRINGE FLOWER
Loropetalum chinense 'Razzleberry' 5-GAL
-  13 ROZANNE HARDY CRANESBILL
Geranium 'Rozanne' 1-GAL
-  16 WHITE WINTER HEATHER
Erica carnea 'Springwood White' 1-GAL

THEATRE ARTS



EXISTING PLANTINGS IN THIS AREA OF THE BED SHALL BE LEFT UNDISTURBED. ANY RHODODENDRONS MAY BE PRUNED TO REDUCE SIZE FEB-MARCH AS NEEDED.

EXISTING RHODODENDRONS IN THIS AREA WILL BE PRUNED TO 3' IN HEIGHT AND TRANSPLANTED TO A SAFE LOCATION DURING THE DEMOLITION AND PAVING PHASE, THEN REPLANTED AS NOTED IN THE PROPOSED RHODODENDRON LAYOUT:

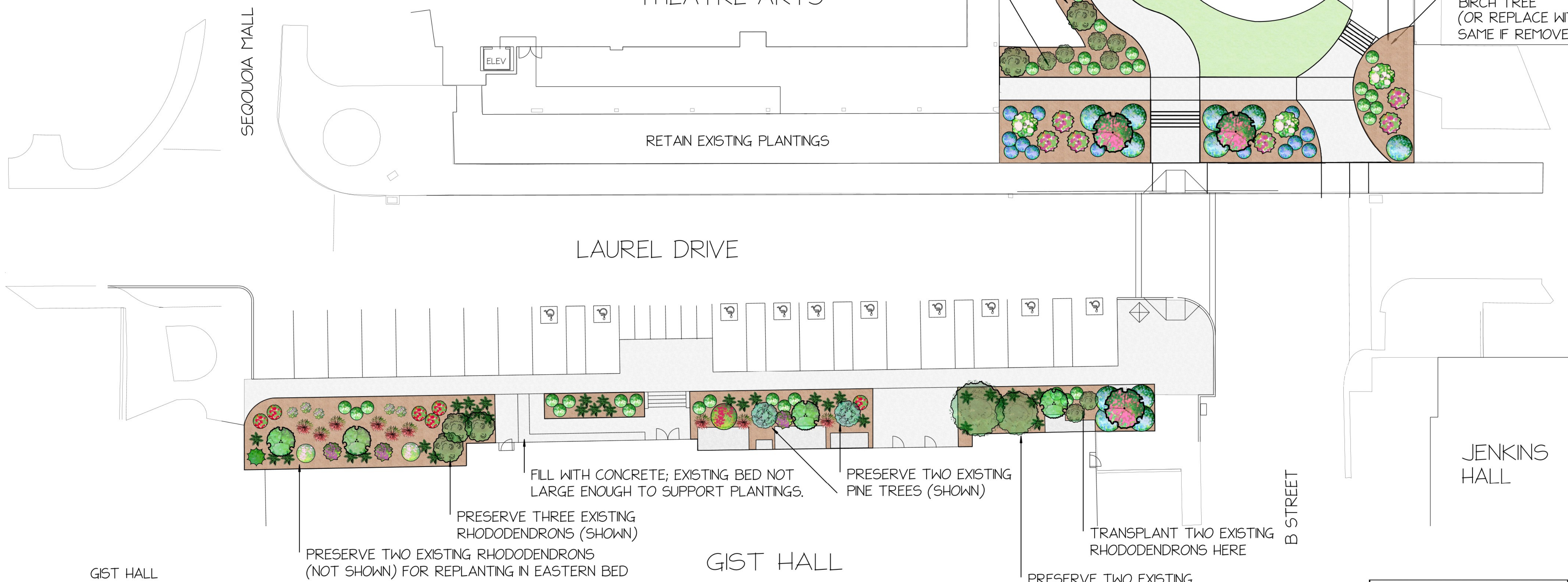


PRESERVE EXISTING LANDSCAPING IN THIS BED AS MUCH AS POSSIBLE. WHERE PLANTS ABSOLUTELY MUST BE REMOVED, PLEASE REPLACE AS SHOWN.

PROPOSED RHODODENDRON LAYOUT AS SHOWN:

TO REMAIN LAWN (REPAIR AS NEEDED)

PRESERVE EXISTING BIRCH TREE (OR REPLACE WITH SAME IF REMOVED)



GIST HALL



GIST HALL

-  1 PURPLE LILY MAGNOLIA
Magnolia liliiflora 'Nigra' 15-GAL
-  4 NATIVE VINE MAPLE
Acer circinatum 15-GAL
-  1 RED CAMELLIA
Camellia sasanqua 'Yuletide' 5-GAL
-  4 NATIVE HEART'S DESIRE CEANOTHUS
Ceanothus gloriosus 'Heart's Desire' 1-GAL
-  2 FAIRY BLUSH DWARF CAMELLIA
Camellia 'Fairy Blush' 5-GAL
-  3 THYME LEAFED FUCHSIA
Fuchsia thymifolia 1-GAL
-  1 NATIVE EVERGREEN HUCKLEBERRY
Vaccinium ovatum 5-GAL
-  9 MIDWINTER FIRE RED-TWIG DOGWOOD
Cornus sanguinea 'Midwinter Fire' 5-GAL
-  6 CHERRIES AND MERLOT RHODODENDRON
Rhododendron 'Cherries and Merlot' 5-GAL
-  33 NATIVE SWORD FERN
Polystichum munitum 1-GAL
-  17 WHITE WINTER HEATHER
Erica carnea 'Springwood White' 1-GAL
- 5 NATIVE SALAL
Gaultheria shallon 1-GAL

FILL WITH CONCRETE; EXISTING BED NOT LARGE ENOUGH TO SUPPORT PLANTINGS.

PRESERVE TWO EXISTING PINE TREES (SHOWN)

TRANSPLANT TWO EXISTING RHODODENDRONS HERE

PRESERVE TWO EXISTING RHODODENDRONS (SHOWN)

PLANTING SPECIFICATIONS
SEE ADDITIONAL SHEETS

CALIFORNIA STATE FIRE MARSHAL APPROVED
Approval of this plan does not authorize or approve any omission or deviation from applicable regulations. Final approval is subject to field inspection. Set of approved plans shall be available on the project site at all times.
Reviewed by: _____
Date: _____

BUILDING PERMIT APPROVAL
This project has demonstrated conformance with applicable codes and standards established by statute and University policy. Based on this determination these documents are
'APPROVED FOR CONSTRUCTION'
Michael Fisher
Campus Deputy Building Official
Humboldt State University
The California State University
Date: _____
Permit #: _____
Other approvals, as applicable:
SFM Approval: _____
DSA Access Approval: _____
Seismic Peer Review: _____
Mech. Peer Review: _____

LANDSCAPE DESIGN BY:
GENEVEVE SCHMIDT ~ LANDSCAPE DESIGN
WWW.GENEVEVESCHMIDTDESIGN.COM
(707)822-2075 GEN@NORTHCOASTGARDENING.COM
LIC# 986304



SCALE 1 INCH = 16 FEET
PRINTED ON 24 X 36 INCH PAPER
SCALE: 1/16"

HUMBOLDT STATE UNIVERSITY - THEATRE ARTS SEISMIC RETROFIT
EXTENT OF LANDSCAPED AREAS

REVISIONS:
1-2-18 GS
3-1-18 GS
3-2-18 GS
5-1-18 GS
5-29-18 GS